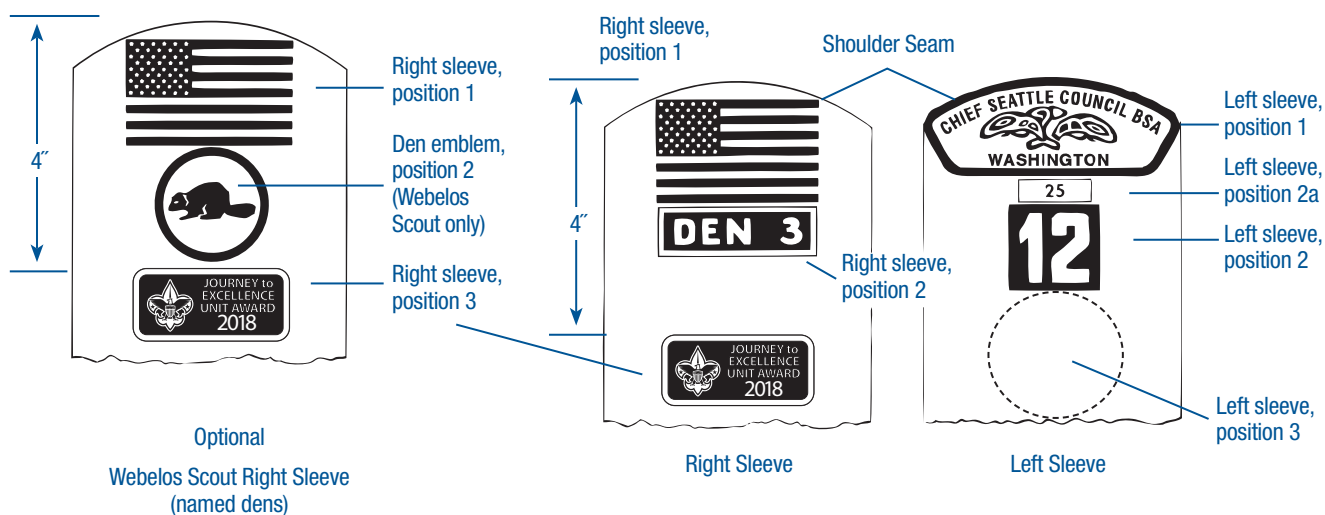


CUB SCOUT INSIGNIA



Cub Scout Program Identification

U.S. flag emblem, cloth, red, white, and blue, No. 103; Cub Scout, Cub Scout leader; right sleeve, position 1. New uniforms have this emblem already sewn in the correct position. Only the BSA-issued flag may be worn. The flag orientation of the BSA uniform flag meets U.S. flag code.

Council shoulder emblem, cloth; Cub Scout and Cub Scout leader; left sleeve, position 1.

Unit number, cloth, white on red, Nos. 10400 through 10408 (last digit indicates the unit number for 0 through 8); for unit number 9, order No. 10406. Cub Scout and Cub Scout leader; left sleeve, position 2, touching council shoulder emblem if veteran unit bar is not worn. Multiple-digit numbers may be special-ordered—2-digit, No. 10409; 3-digit, No. 10410; 4-digit, No. 10411. Custom numerals cannot have any letters on them.

Founder's Bar, No. 610129; worn directly under unit number.

Lone Scout emblem, cloth, red and black on tan, No. 621122; Lone Cub Scout, left sleeve, position 2 (in place of unit number).

Veteran unit bars, cloth, Cub Scout and Cub Scout leader, left sleeve, position 2a; 25 years, No. 133; 30 years, No. 50006; 35 years, No. 50007; 40 years, No. 50008; 45 years, No. 50009; 50 years, No. 105; 55 years, No. 194; 60 years, No. 195; 65 years, No. 196; 70 years, No. 197; 75 years, No. 107; 80 years, No. 198; 85 years, No. 138; 90 years, No. 50010; 95 years, No. 50011; 100 years, No. 50012; 105 years, No. 631067.

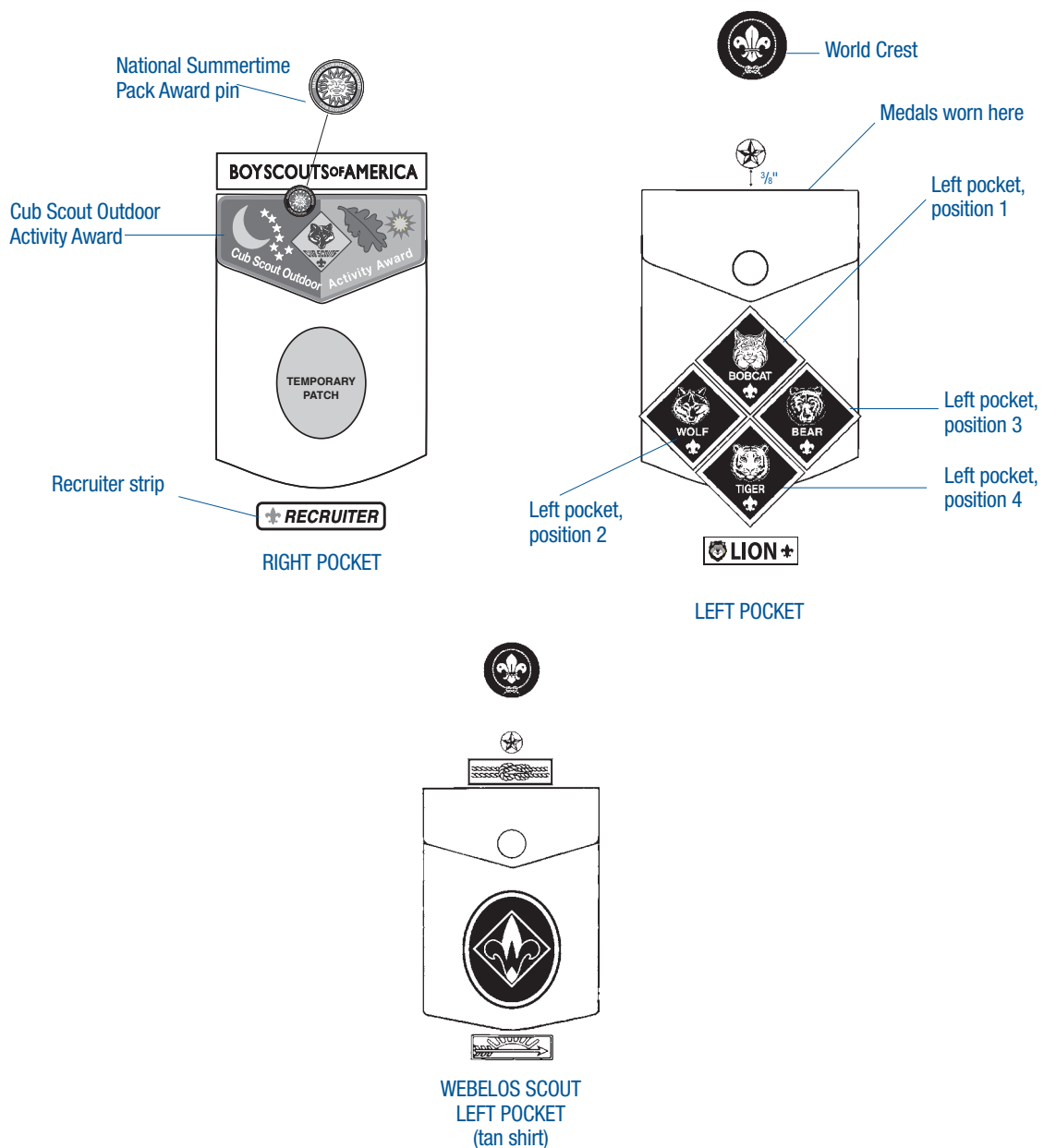
Unit number with veteran bar, cloth, unit number with veteran bar embroidered above the numerals. Special-ordered 2-digit unit number, No. 10412; 3-digit, No. 10413; 4-digit, 10414. Custom numerals cannot have any letters on them.

Den number, gold on blue, Nos. 10701 through 10724 (last two digits indicate the den number); Cub Scout, Webelos Scout, or den leader, right sleeve, position 2, immediately below and touching the U.S. flag.

Webelos den emblem, right sleeve, position 2; optional (see the “Scouts BSA Insignia” section, page 29).

Bolo tie, No. 830; Cub Scout leader, optional wear with open-collar shirt.

Not more than five medals may be worn at a time, pinned in a single row immediately above the seam of the left pocket.



Cub Scout Advancement

Note: Cub Scout advancement badges must be attached directly to the uniform.

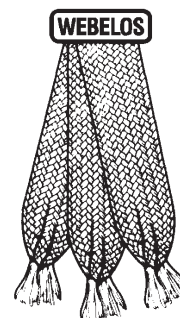


Lion badge, cloth, yellow and black, No. 646287, left pocket, position 4.



Wolf badge, cloth, red, gold, and gray, No. 371; Cub Scout, left pocket, position 2.

Webelos metal miniature pin, No. 153; parents, nonuniform wear.



Bobcat badge, cloth, blue and gold, No. 370; Cub Scout, left pocket, position 1.

Wolf metal miniature pin, No. 648442; parents, non-uniform wear.



Bear badge, cloth, blue, gold, and brown, No. 646375; Cub Scout, left pocket, position 3.

Webelos colors, red, yellow, and green tabs, No. 452; pack option for wear by Webelos Scouts, right sleeve, under and touching U.S. flag. If den number is worn, under and touching den number. With either option, colors cover Journey to Excellence insignia and den emblem. If colors are worn, adventure pins are worn on the tabs.

Bobcat metal miniature pin, No. 41; parents, non-uniform wear.



Tiger badge, cloth, orange and black, No. 620079; Cub Scout, left pocket, position 4.

Bear metal miniature pin, No. 604962; parents, non-uniform wear.



Webelos badge (oval), cloth, blue and gold on tan oval, No. 80375; Webelos Scout, left pocket, centered.



Arrow of Light badge, cloth, gold and blue on tan, No. 44; Webelos Scout, below left pocket; metal pin, No. 463; Webelos Scout, below left pocket.

Arrow of Light metal miniature pin, No. 115; parents; nonuniform wear.

Cub Scout Adventure Loops and Pins

Adventure Loops, worn on navy blue Cub Scout belt only. The blue belt may be worn with the Webelos tan uniform (see page 14).

Adventure Pins, Webelos Scout, worn on the Webelos colors or on the Webelos cap.

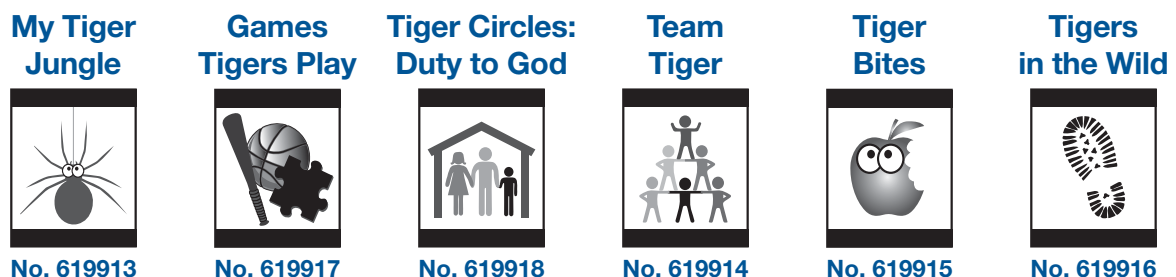
Lion Required Adventure Loops



Lion Elective Adventure Loops



Tiger Required Adventure Loops



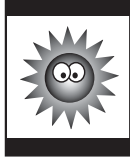
Tiger Elective Adventure Loops

**Curiosity,
Intrigue, and
Magical Mysteries**



No. 619921

**Earning
Your Stripes**



No. 619925

**Family
Stories**



No. 619922

**Floats
and Boats**



No. 619928

**Good
Knights**



No. 619923

**Rolling
Tigers**



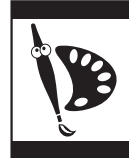
No. 619920

**Sky Is
the Limit**



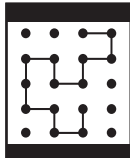
No. 619926

**Stories
in Shapes**



No. 619927

Tiger-iffic!



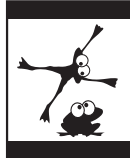
No. 619924

**Tiger: Safe
and Smart**



No. 619919

**Tiger
Tag**



No. 619929

**Tiger
Tales**



No. 619930

**Tiger
Theater**



No. 619931

Wolf Required Adventure Loops

Council Fire:

**Call of
the Wild**



No. 619932

**Duty to
Country**



No. 619933

**Duty to God
Footsteps**



No. 619937

**Howling at
the Moon**



No. 619934

**Paws on
the Path**



No. 619935

**Running
With the Pack**



No. 619936

Wolf Elective Adventure Loops

Adventures in Coins



No. 619948

Air of the Wolf



No. 619938

Code of the Wolf



No. 619939

Collections and Hobbies



No. 619940

Cubs Who Care



No. 619941

Digging in the Past



No. 619942

Finding Your Way



No. 619943

Germs Alive!



No. 619945

Grow Something



No. 619944

Hometown Heroes



No. 619947

Motor Away



No. 619950

Paws of Skill



No. 619949

Spirit of the Water



No. 619946

Bear Required Adventure Loops

Baloo the Builder



No. 619957

Bear Claws



No. 619951

Bear Necessities



No. 619952

Fellowship and Duty to God



No. 619956

Fur, Feathers, and Ferns



No. 619953

Paws for Action (Duty to Country)



No. 619955

Bear Elective Adventure Loops

A Bear Goes Fishing



No. 619961

Bear Picnic Basket



No. 619959

Beat of the Drum



No. 619958

Critter Care



No. 619965

Forensics



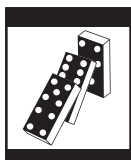
No. 619962

Grin and Bear It



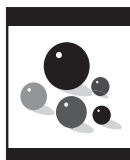
No. 619954

Make It Move



No. 619963

Marble Madness



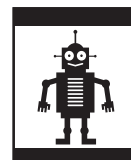
No. 619964

Roaring Laughter



No. 619967

Robotics



No. 619968

Salmon Run



No. 619966

Super Science



No. 619969

A World of Sound



No. 619960

Webelos Required Adventure Pins

Cast Iron Chef



No. 619984

Duty to God and You



No. 619988

First Responder



No. 619985

Stronger, Faster, Higher



No. 619986

Webelos Walkabout



No. 619987

Arrow of Light Required Adventure Pins

Building a Better World



No. 619971

Outdoor Adventurer



No. 619972

Duty to God in Action



No. 619974

Scouting Adventure



No. 619973

Webelos and Arrow of Light Elective Adventure Pins

Adventures in Science



No. 619989

Aquanaut



No. 619970

Art Explosion



No. 619983

Aware and Care



No. 619990

Build It



No. 619991

Build My Own Hero



No. 619992

Castaway



No. 619994

Earth Rocks!



No. 619995

Engineer



No. 619996

Fix It



No. 619975

Game Design



No. 619981

Into the Wild



No. 619976

Into the Woods



No. 619977

Looking Back, Looking Forward



No. 619978

Maestro!



No. 619979

Moviemaking



No. 619982

Project Family



No. 619997

Sports



No. 619980

Cub Scout Pack Badges of Office

Badges of office are worn on the left sleeve, position 3, except as noted.



Pack committee chair, cloth, gold on blue, No. 18059.



Cubmaster, cloth, silver on blue, No. 383; Unit Leader Award of Merit gold star version, No. 610094.



Assistant Cubmaster, cloth, gold on blue, No. 381.



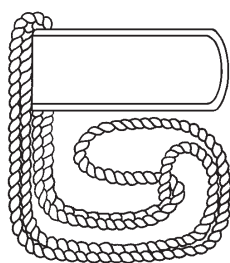
Pack committee, cloth, gold on blue, No. 379.



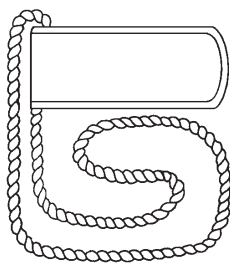
Cub Scout den leader, cloth, gold on blue, No. 376.



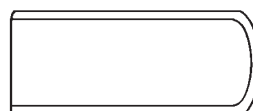
Assistant Cub Scout den leader, cloth, gold on blue, No. 375.



Denner shoulder cord, gold double-strand, No. 368; Cub Scout and Webelos Scout; over left shoulder.



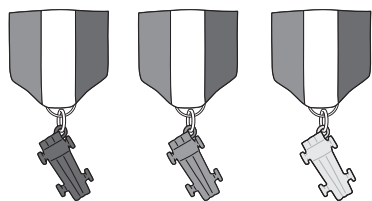
Assistant denner shoulder cord, gold single-strand, No. 385; Cub Scout and Webelos Scout; over left shoulder.



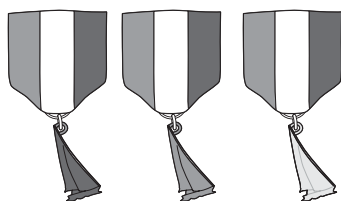
Denner shoulder tab, felt, gold, No. 369; Cub Scout and Webelos Scout former denners; on left shoulder.

Cub Scout Participation and Achievement

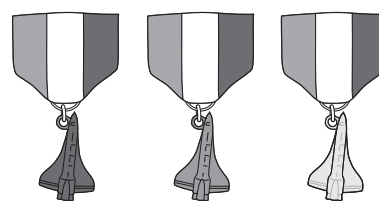
Not more than five medals may be worn at a time, pinned in a single row immediately above the seam of the left pocket.



Pinewood derby medals, with red, white, and blue ribbons; Cub Scout, above left pocket: blue, No. 610204; red, No. 610205; white, No. 610206.



Raingutter regatta medals, with red, white, and blue ribbons; Cub Scout, above left pocket: blue, No. 610207; red, No. 610208; white, No. 610209.



Space derby medals, with red, white, and blue ribbons; Cub Scout, above left pocket: blue, No. 610210; red, No. 610211; white, No. 610212.



Cub Scout Outdoor Activity Award, cloth emblem, No. 14235; worn on right pocket flap. Each successive time the award is earned, a Wolf track pin, No. 14236, may be added to the flap.



Messengers of Peace emblem, No. 615442; youth members and adult leaders; worn around World Crest emblem.



National Summertime Pack Award, rank-coordinated pins: Tiger, No. 14332; Wolf, No. 14333; Bear, No. 14334; Webelos Scout, No. 14335; worn centered on right pocket flap.



Whittling Chip emblem, No. 8598; Cub Scouts and Webelos Scouts; not for uniform wear.



1910 World Crest Ring emblem, No. 619748; youth members and adult leaders; worn around World Crest emblem.